



THE
SPRAY NOZZLE
PEOPLE

XAER

Pressure-fed
External Mix
Narrow Angle



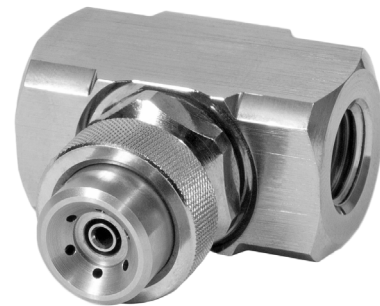
AIR ATOMISING

DESIGN FEATURES

- ✓ Requires pressurised air and fluid to operate
- ✓ External mix allows for the spraying of viscous fluids
- ✓ Modular design allows swapping between nozzle type by changing air and fluid caps
- ✓ Different body options with variable inlet orientations
- ✓ Adaptor for mounting the nozzles through walls
- ✓ Optional air shut off system
- ✓ Optional clean out pins

SPRAY CHARACTERISTICS

- ✓ Narrow spray angle (10°- 30°)
- ✓ Precise metering of the liquid flow rate
- ✓ Flow rates between 2.7 and 340 litres per hour
- ✓ Moderate spray projection
- ✓ Variable atomisation



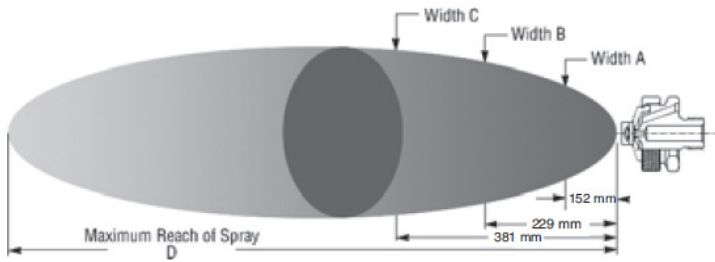
The XAER air atomising nozzle produces finely atomised sprays in a full cone pattern. The external mix design means that it can handle viscous fluids and also means control of the flow rates is simpler than with internal mix variants. These features mean the XAER is most commonly used for:

Moistening
Lubrication
Spraying Viscous Fluids
Dust Control
And more.

CALL NOW : +44 (0) 1273 400092

www.spray-nozzle.co.uk

The Go-to People for spray nozzle solutions



XAER Set-up Flow Rates and Dimensions

Pressure-fed, External Mix, Narrow Round Spray Pattern, 1/8" and 1/4" Pipe Sizes
Standard materials: Nickel-plated Brass, 303 and 316 Stainless Steel

Set-up No	Fluid & air cap No.	0.2 Bar Liquid		0.3 Bar Liquid		0.7 Bar Liquid		1.5 Bar Liquid		3 Bar Liquid		Spray Dimensions Bar					
		Air bar	l/h	Nm ³ /hr	Air bar	l/h	Nm ³ /hr	Air bar	l/h	Nm ³ /hr	Air bar	l/h	Nm ³ /hr	Air	Liquid	A mm	B mm
ER050	FC3 & AC1801	0.3	1.3	0.3	1.3	0.7	1.9	1.4	2.9	1.4	2.9	0.2	0.7	50	90	130	2.3
		0.7	1.9	0.7	1.9	1.4	2.9	2.1	3.7	2.1	3.7	0.3	1.4	60	90	110	3
		1.4	2.9	1.4	2.9	2.1	3.7	2.8	4.6	3.4	5.6	0.3	2.8	40	90	130	3.7
		2.1	3.7	2.1	3.7	2.8	4.6	3.4	5.6	4.1	6.5	0.7	2.8	60	80	130	4.9
				2.8	4.6	2.8	4.6	3.4	5.6	4.1	6.5	1.5	1.4	60	60	80	4.3
ER150	FC4 & AC1801	0.3	1.3	0.3	1.3	0.7	1.9	1.4	2.9	1.4	2.9	0.2	0.7	50	60	80	3
		0.7	1.9	0.7	1.9	1.4	2.9	2.1	3.7	2.1	3.7	0.3	1.4	60	80	80	4.3
		1.4	2.9	1.4	2.9	2.1	3.7	2.8	4.6	2.8	4.6	0.3	2.8	60	60	110	4.9
		2.1	3.7	2.1	3.7	2.8	4.6	3.4	5.6	4.1	6.5	0.7	2.8	60	80	100	5.5
		2.8	4.6	3.4	5.6	4.1	6.5	4.1	6.5	4.8	7.6	1.5	2.8	70	90	100	5.5
ER250	FC3 & AC1801	0.4	1.4	0.7	1.9	0.7	1.9	1.4	2.9	1.4	2.9	0.2	0.7	80	90	100	3
		0.7	1.9	1.4	2.9	1.4	2.9	2.1	3.7	2.1	3.7	0.3	1.4	80	80	130	4.3
		1.4	2.9	2.1	3.7	2.1	3.7	2.8	4.6	2.8	4.6	0.3	2.8	70	80	120	4.3
		2.1	3.7	2.8	4.6	2.8	4.6	3.4	5.6	4.1	6.5	0.7	2.8	80	90	130	5.2
		2.8	4.6	3.4	5.6	3.4	5.6	4.1	6.5	4.1	6.5	1.5	1.4	80	110	110	5.5
ER350	FC6 AC1802	0.7	5.5	0.7	5.5	1.4	8.8	2.1	11.6	2.8	14.3	0.2	0.7	80	130	150	2.7
		1	7.2	1.4	8.8	2.1	11.6	2.8	14.3	3.4	17	0.3	1.4	80	100	150	3.4
		1.4	8.8	2.1	11.6	2.8	14.3	3.4	17	4.1	19.6	0.3	2.8	80	100	150	4.9
		2.1	11.6	2.8	14.3	3.4	17	4.1	19.6	4.8	22.3	0.7	2.8	80	100	150	4.9
		2.8	14.3	3.4	17	4.1	19.6	4.1	19.6	5.5	25.1	1.5	2.1	80	100	150	4.6
ER450	FC2 & AC1802	0.7	5.5	0.7	5.5	1	7.2	2.1	11.6	2.8	14.3	0.2	0.7	100	140	210	4.3
		1	7.2	1	7.2	1.4	8.8	2.8	14.3	3.4	17	0.3	1.4	110	130	150	5.5
		1.4	8.8	1.4	8.8	2.1	11.6	3.4	17	4.1	19.6	0.3	2.8	100	110	140	6.4
		2.1	11.6	2.1	11.6	2.8	14.3	4.1	19.6	4.8	22.3	0.7	2.8	130	120	180	6.7
		2.8	14.3	2.8	14.3	3.4	17	4.1	19.6	5.5	25.1	1.5	2.1	120	110	160	6.1
ER550	FC1 & AC1802	1	7.2	1.4	8.8	2.8	14.3	4.1	19.6	4.8	22.3	0.2	1.4	140	150	220	4.9
		1.4	8.8	2.1	11.6	3.4	17	4.1	19.6	5.5	25.1	0.3	1.4	130	150	230	4.6
		2.1	11.6	2.8	14.3	4.1	19.6	4.8	22.3	5.5	25.1	0.3	2.8	130	170	180	6.4
		2.8	14.3	3.4	17	4.1	19.6	4.8	22.3	5.5	25.1	0.7	4.1	140	150	240	6.7
		3.4	17	4.1	19.6	5.5	25.1	5.5	25.1	5.5	25.1	1.5	2.8	110	150	180	6.7
ER650	FC8 & AC1803	1	11.6	1.4	14.1	2.1	18.8	3.4	27.7	4.8	36.1	0.2	1.4	130	150	200	5.2
		1.4	14.1	1.7	16.6	2.8	23.2	3.8	27.7	4.1	31.9	0.3	2.1	150	140	150	6.7
		1.7	16.6	2.1	18.8	3.4	27.7	4.1	27.7	4.1	31.9	0.3	3.4	120	130	160	6.7
		2.1	18.8	2.8	23.2	3.8	27.7	4.1	27.7	4.1	31.9	0.7	4.1	130	140	170	6.7
		2.8	23.2	3.4	27.7	4.1	27.7	4.1	27.7	4.1	31.9	1.5	3.4	130	150	150	6.7
ER750	FC9 & AC1803	1.4	14.1	2.1	18.8	2.8	23.2	3.4	27.7	4.8	36.1	0.2	1.4	150	150	220	5.8
		2.1	18.8	2.8	23.2	3.4	27.7	4.1	27.7	4.1	31.9	0.3	2.1	140	160	200	6.4
		2.8	23.2	3.4	27.7	4.1	27.7	4.1	27.7	4.1	31.9	0.3	4.1	150	170	180	6.7
		3.4	27.7	3.8	29.8	4.5	34	5.5	40.5	5.5	44.8	0.7	4.1	130	130	180	6.7
		4.1	31.9	4.1	31.9	4.8	36.1	6.2	44.8	6.2	44.8	1.5	3.4	130	150	200	6.1
ER850	FC5 & AC1803	2.8	23.2	3.8	29.8	4.5	34	5.5	40.5	5.5	44.8	0.2	2.8	150	160	180	6.7
		3.4	27.7	4.1	31.9	4.8	36.1	6.2	44.8	6.2	44.8	0.3	4.8	90	110	180	6.1
		3.8	29.8	4.5	34	5.5	40.5	6.2	44.8	6.2	44.8	0.7	4.8	90	110	150	5.8
		4.1	31.9	4.8	36.1	6.2	44.8	6.2	44.8	6.2	44.8	0.7	6.2	80	100	150	5.5
		4.5	34	5.5	40.5	6.2	44.8	6.2	44.8	6.2	44.8	1.5	5.5	90	100	150	5.5